



About "OT-OIL" Company

Implementation of IT projects in the oil and gas industry



AO "OT-OL"
4a/3, General Tyulenev St.
Moscow, Russia, postal code 117465
Phone: +7 (495) 565-35-96
Email: info@ot-oil.com

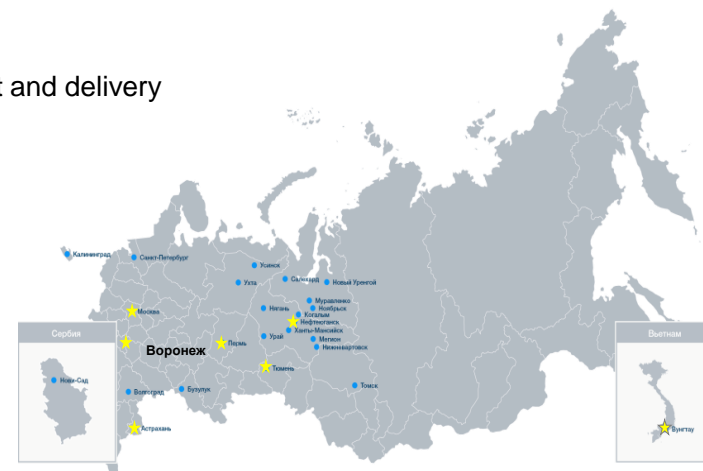


Line of business: JSC «OT-OIL» – software vendor specializing in IT solutions development and delivery

Resources : 80+ employees

Location : Moscow, Voronezh, Tyumen, Perm, Astrakhan, VungTau (Vietnam)


- Product :**
1. «Platform ATOLL»
 2. «ELDOCA»
 3. «ATOLL IV»
 4. «MINERAL»




Business profile:

- data management;
- management of electronic archives, digital passports of objects;
- digitalization of oil and gas production and oilfield services processes;
- digitalization of mining processes;
- digitalization of the project activity of research, development and engineering centers

Affiliated companies:

- 

«Element5NefteGaz»

 - consulting in Upstream
 - multi-vendor system integrator in Upstream
- 

«TechnIntellect»

 - resident of SKOLKOVO
 - R&D
 - AI in data management

Certificates:



KEY CUSTOMERS:

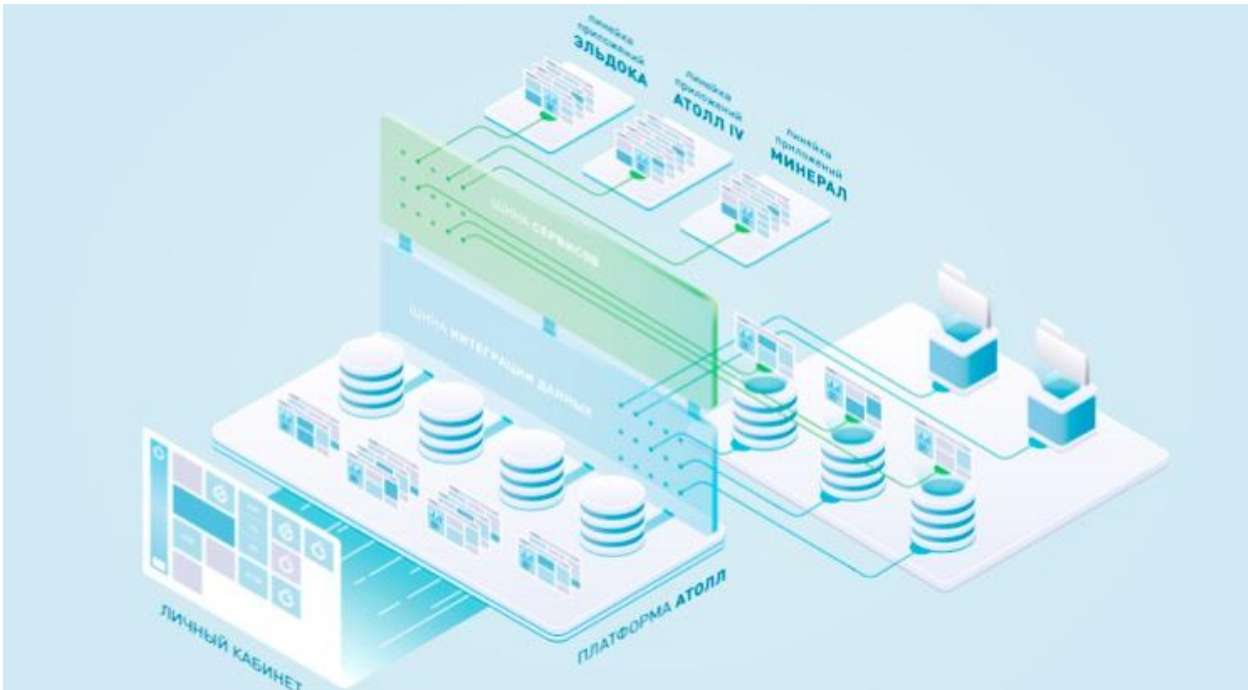




- 1. Platform ATOLL** – corporate integration platform
- 2. ELDOCA** – automation of the design workflow / docflow
- 3. ATOLL IV** – digitalization of oil and gas reservoirs (including offshore) exploration, development and exploitation processes
- 4. MINERAL** – digitalization of mining operations

FEATURES OF PRODUCT CATALOG OF OT-OIL JSC:

- Since **2000**
- Includes 4 application lines and **150+** own **modules** and partner modules
- **70+ installed** in 20+ Companies
- **7 000+ users** accounts
- Controls data on more **210 000** wells, **10 000** field models, **600** service brigades, **11 000** geological and technological actions per year, **35 000** cases of downtime of service brigades per year, **2 000 000** geological and technological operations per year
- Used in **Russian, Vietnam** and Serbia
- Included in the Russian Federation software register and is used in **government projects** (SKIF-Nedra, GIS Neftekontrol)
- Works on a **unified ATOLL Platform**
- International certificate **ORACLE EXASTACK READY**
- **API** - it provides access to third-party vendors for services and data platform
- **SDK** - visual, transaction and ready-made application components for creating modules and connecting to the ATOLL Platform
- **Multilanguage** support



1. Service Bus

- IT solutions functions are registered in the Service Bus;
- IT-solutions are available in User Account according to business process role;

2. Data Integration Bus

- data sources are registered in the Integration Data Bus;
- exchange of information between data sources is configured via a Data Bus;

3. Corporate Data Search

- User Account is able to search all data in all storage sources via the Integration Data Bus;

4. Data Warehouses

- Repository of historical data and accumulated unstructured information is created for fuel and energy sector, mining industry and interbranch information;

5. SDK - development kit

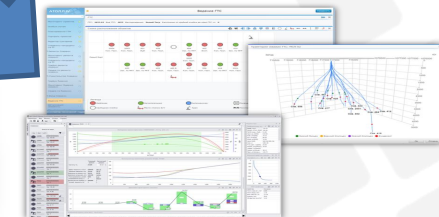
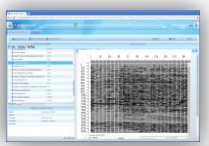
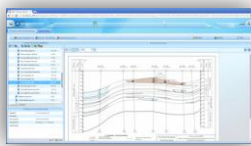
- new services are created by SDK and ready-made components;
- services are automatically registered in the Service Bus.



Software registry

User Account /
Personal area

Business process role



Data Sources
Register

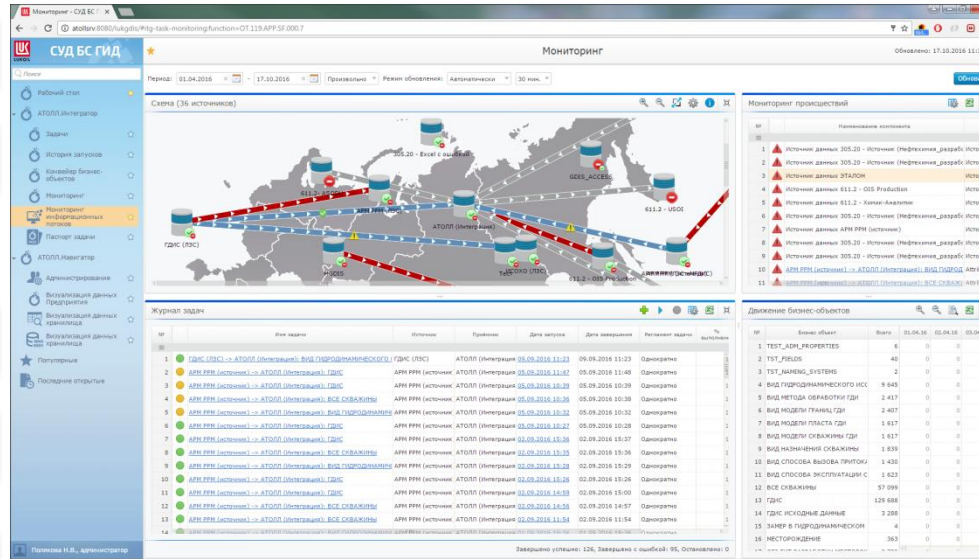
Connectors to
Data Sources

Subject-matter model

Global ID

MDM, ETL

Data flow monitoring



Мониторинг

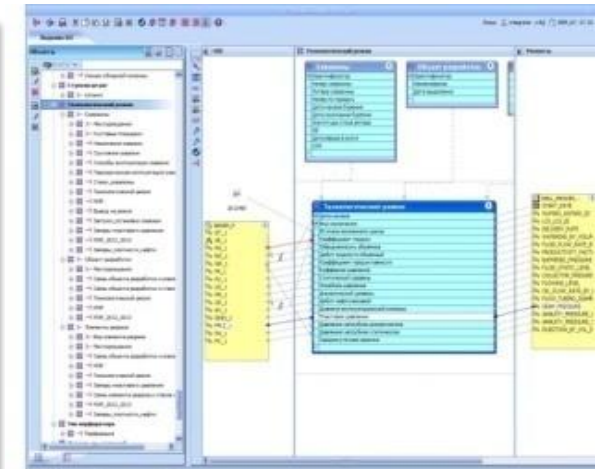
Схема (36 источников)

Журнал задач

№	Имя задачи	Источник	График	Дата запуска	Дата завершения	Результат задачи
1	ГДЭС (РЭС) -> АТОЛЛ (Интерактив) -> ВИД ПЕРИОДИЧЕСКОГО	ГДЭС (РЭС)	АТОЛЛ (Интерактив)	05.09.2016 11:23	05.09.2016 11:23	Одноразово
2	АРМ РРМ (источник) -> АТОЛЛ (Интерактив) -> ГДЭС	АРМ РРМ (источник)	АТОЛЛ (Интерактив)	05.09.2016 11:42	05.09.2016 11:49	Одноразово
3	АРМ РРМ (источник) -> АТОЛЛ (Интерактив) -> ГДЭС	АРМ РРМ (источник)	АТОЛЛ (Интерактив)	05.09.2016 10:39	05.09.2016 10:39	Одноразово
4	АРМ РРМ (источник) -> АТОЛЛ (Интерактив) -> ВСЕ СВЯЖКИ	АРМ РРМ (источник)	АТОЛЛ (Интерактив)	05.09.2016 10:38	05.09.2016 10:38	Одноразово
5	АРМ РРМ (источник) -> АТОЛЛ (Интерактив) -> ВИД ПЕРИОДИЧЕСКОГО	АРМ РРМ (источник)	АТОЛЛ (Интерактив)	05.09.2016 10:33	05.09.2016 10:33	Одноразово
6	АРМ РРМ (источник) -> АТОЛЛ (Интерактив) -> ГДЭС	АРМ РРМ (источник)	АТОЛЛ (Интерактив)	02.09.2016 18:22	02.09.2016 18:28	Одноразово
7	АРМ РРМ (источник) -> АТОЛЛ (Интерактив) -> ГДЭС	АРМ РРМ (источник)	АТОЛЛ (Интерактив)	02.09.2016 18:26	02.09.2016 18:37	Одноразово
8	АРМ РРМ (источник) -> АТОЛЛ (Интерактив) -> ВСЕ СВЯЖКИ	АРМ РРМ (источник)	АТОЛЛ (Интерактив)	02.09.2016 18:23	02.09.2016 18:36	Одноразово
9	АРМ РРМ (источник) -> АТОЛЛ (Интерактив) -> ВИД ПЕРИОДИЧЕСКОГО	АРМ РРМ (источник)	АТОЛЛ (Интерактив)	02.09.2016 18:23	02.09.2016 18:36	Одноразово
10	АРМ РРМ (источник) -> АТОЛЛ (Интерактив) -> ГДЭС	АРМ РРМ (источник)	АТОЛЛ (Интерактив)	02.09.2016 18:26	02.09.2016 18:28	Одноразово
11	АРМ РРМ (источник) -> АТОЛЛ (Интерактив) -> ГДЭС	АРМ РРМ (источник)	АТОЛЛ (Интерактив)	02.09.2016 18:33	02.09.2016 18:50	Одноразово
12	АРМ РРМ (источник) -> АТОЛЛ (Интерактив) -> ВСЕ СВЯЖКИ	АРМ РРМ (источник)	АТОЛЛ (Интерактив)	02.09.2016 18:34	02.09.2016 18:47	Одноразово
13	АРМ РРМ (источник) -> АТОЛЛ (Интерактив) -> ВСЕ СВЯЖКИ	АРМ РРМ (источник)	АТОЛЛ (Интерактив)	02.09.2016 11:54	02.09.2016 11:54	Одноразово
14	АРМ РРМ (источник) -> АТОЛЛ (Интерактив) -> ВСЕ СВЯЖКИ	АРМ РРМ (источник)	АТОЛЛ (Интерактив)	02.09.2016 11:54	02.09.2016 11:54	Одноразово

Движение бизнес-объектов

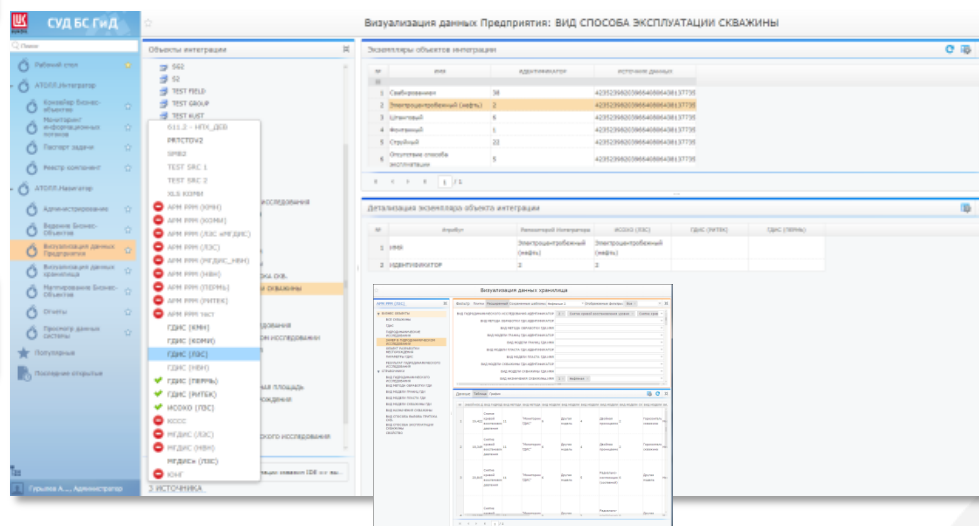
№	Имя объекта	Валюта	01.04.16	01.04.15	01.04.14
1	TEST_ARM_CORRECTES	40	0	0	0
2	TEST_PESLO	40	0	0	0
3	TEST_NAMEING_SYSTEME	2	0	0	0
4	ВИД ПЕРИОДИЧЕСКОГО ИСС	9 648	0	0	0
5	ВИД МЕТОДА ОБРАБОТКИ ГДН	2 417	0	0	0
6	ВИД МОДЕЛИ ТРАНСФОР	2 407	0	0	0
7	ВИД МОДЕЛИ ПЛАСТА ГДН	1 617	0	0	0
8	ВИД МОДЕЛИ СВЯЖКИ ГДН	1 617	0	0	0
9	ВИД НАЗНАЧЕНИЯ СВЯЖКИ	1 639	0	0	0
10	ВИД СПОСОБА ВОЗВРА ПРИБО	1 430	0	0	0
11	ВИД СПОСОБА ЭКСПЛУАТАЦИИ С	1 823	0	0	0
12	ВСЕ СВЯЖКИ	57 288	0	0	0
13	ГДЭС	129 680	0	0	0
14	ГДЭС ИСХОДНЫЕ ДАННЫЕ	3 288	0	0	0
15	ЗАМЕР В ПЕРИОДИЧЕСКОМ	4	0	0	0
16	МЕСТОПОЛОЖЕНИЕ	363	0	0	0



Мониторинг потоков данных

Таблица соединений

1. Источник данных 305.20 - Источник (Нефтехимия_разраб) - Источник
2. Источник данных 305.20 - Источник (Нефтехимия_разраб) - Источник
3. Источник данных ЭТАЛОН - Источник
4. Источник данных 611.2 - Источник (Нефтехимия_разраб) - Источник
5. Источник данных 611.2 - Источник (Нефтехимия_разраб) - Источник
6. Источник данных 305.20 - Источник (Нефтехимия_разраб) - Источник
7. Источник данных АРМ РРМ (источник) - Источник
8. Источник данных 305.20 - Источник (Нефтехимия_разраб) - Источник
9. Источник данных 305.20 - Источник (Нефтехимия_разраб) - Источник
10. АРМ РРМ (источник) -> АТОЛЛ (Интерактив) -> ВИД ПЕРИОДИЧЕСКОГО
11. АРМ РРМ (источник) -> АТОЛЛ (Интерактив) -> ВСЕ СВЯЖКИ

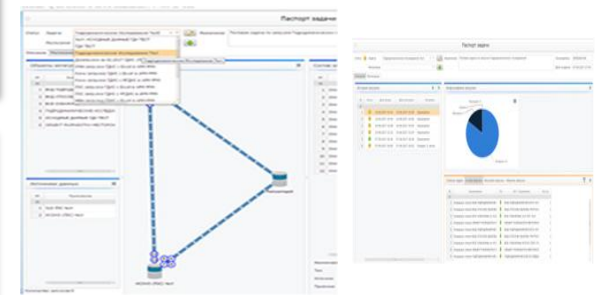


Визуализация данных Предприятия: ВИД СПОСОБА ЭКСПЛУАТАЦИИ СКВАЖИНЫ

№	Имя	Администратор	Источник данных
1	Свайрование	38	42322942603964894084137795
2	Инструментальный (лифт)	2	42322942603964894084137795
3	Контурный	6	42322942603964894084137795
4	Исторический	1	42322942603964894084137795
5	Струйный	22	42322942603964894084137795
6	Опущенный способ эксплуатации	5	42322942603964894084137795

Детальная информация о конкретном объекте интеграции

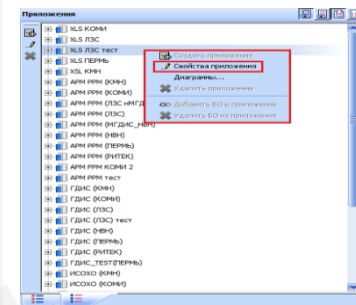
Визуализация данных (таблица)



Мониторинг потоков данных

Таблица соединений

График



Присоединение

- 1. XLS КОММ
- 2. XLS ГДЭС
- 3. XLS ГДЭС ТЕСТ
- 4. XLS ГЕРМ
- 5. XLS ИМ
- 6. АРМ РРМ (ОФН)
- 7. АРМ РРМ (ОСМ)
- 8. АРМ РРМ (ОСМ) 2
- 9. АРМ РРМ (ОСМ) ТЕСТ
- 10. АРМ РРМ (ОФН)
- 11. АРМ РРМ (ОФН) 2
- 12. АРМ РРМ (ОФН) ТЕСТ
- 13. АРМ РРМ (ОФН)
- 14. АРМ РРМ (ОФН) ТЕСТ
- 15. АРМ РРМ (ОФН)
- 16. АРМ РРМ (ОФН) ТЕСТ
- 17. АРМ РРМ (ОФН)
- 18. АРМ РРМ (ОФН) ТЕСТ
- 19. АРМ РРМ (ОФН)
- 20. АРМ РРМ (ОФН) ТЕСТ
- 21. АРМ РРМ (ОФН)
- 22. АРМ РРМ (ОФН) ТЕСТ
- 23. АРМ РРМ (ОФН)
- 24. АРМ РРМ (ОФН) ТЕСТ
- 25. АРМ РРМ (ОФН)
- 26. АРМ РРМ (ОФН) ТЕСТ
- 27. АРМ РРМ (ОФН)
- 28. АРМ РРМ (ОФН) ТЕСТ
- 29. АРМ РРМ (ОФН)
- 30. АРМ РРМ (ОФН) ТЕСТ
- 31. АРМ РРМ (ОФН)
- 32. АРМ РРМ (ОФН) ТЕСТ
- 33. АРМ РРМ (ОФН)
- 34. АРМ РРМ (ОФН) ТЕСТ
- 35. АРМ РРМ (ОФН)
- 36. АРМ РРМ (ОФН) ТЕСТ
- 37. АРМ РРМ (ОФН)
- 38. АРМ РРМ (ОФН) ТЕСТ
- 39. АРМ РРМ (ОФН)
- 40. АРМ РРМ (ОФН) ТЕСТ
- 41. АРМ РРМ (ОФН)
- 42. АРМ РРМ (ОФН) ТЕСТ
- 43. АРМ РРМ (ОФН)
- 44. АРМ РРМ (ОФН) ТЕСТ
- 45. АРМ РРМ (ОФН)
- 46. АРМ РРМ (ОФН) ТЕСТ
- 47. АРМ РРМ (ОФН)
- 48. АРМ РРМ (ОФН) ТЕСТ
- 49. АРМ РРМ (ОФН)
- 50. АРМ РРМ (ОФН) ТЕСТ



Searching in all data sources

Data model Searching

Index Searching

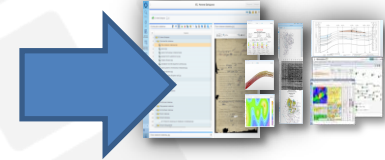
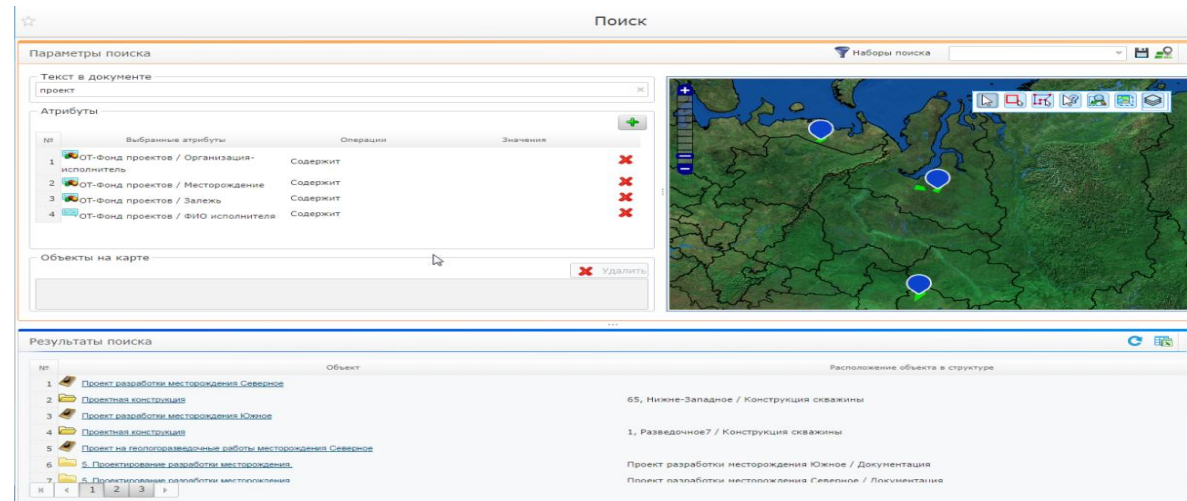
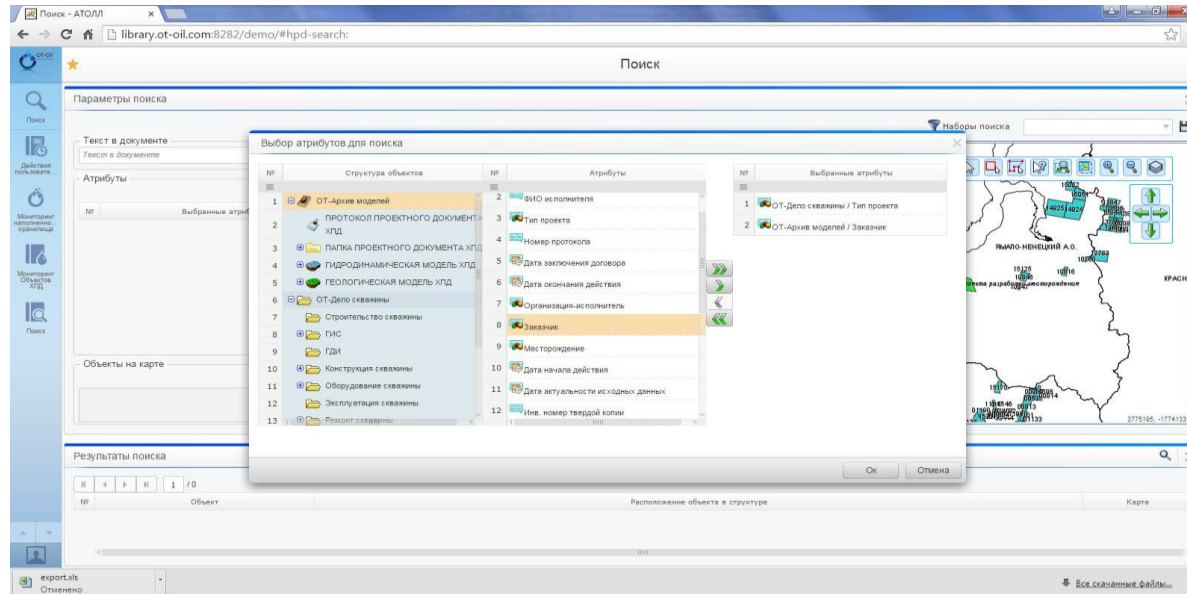
Context Searching

Attribute Searching

Map Searching

Searching results viewing

40+ industry visualizers





Digital passports of objects

Electronic Archives

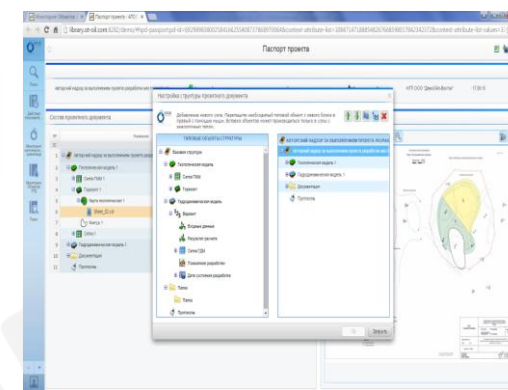
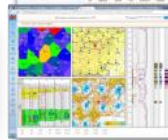
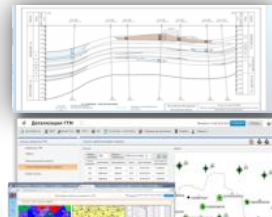
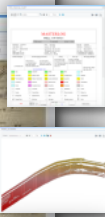
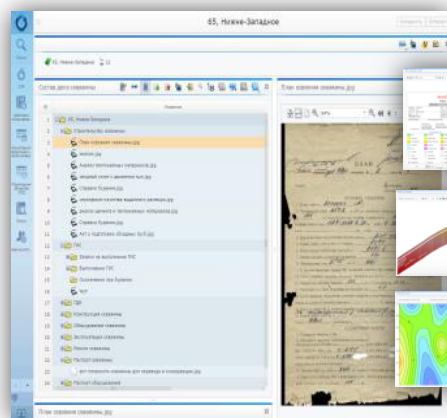
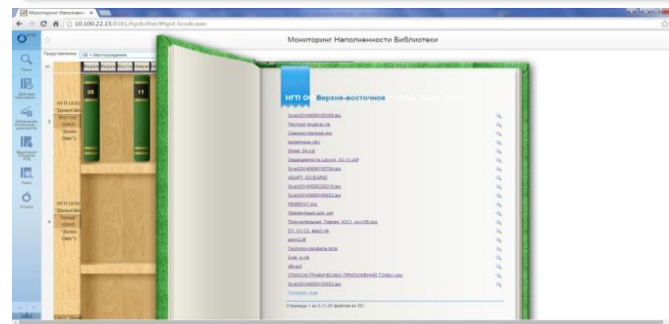
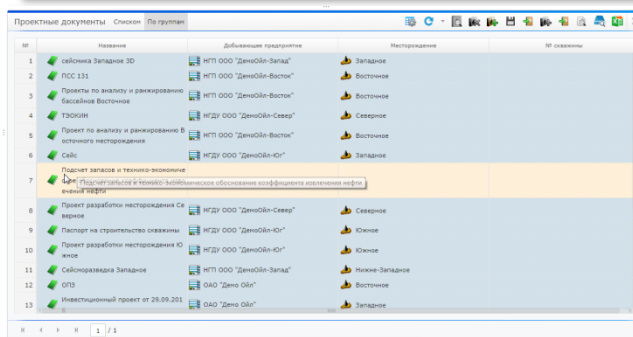
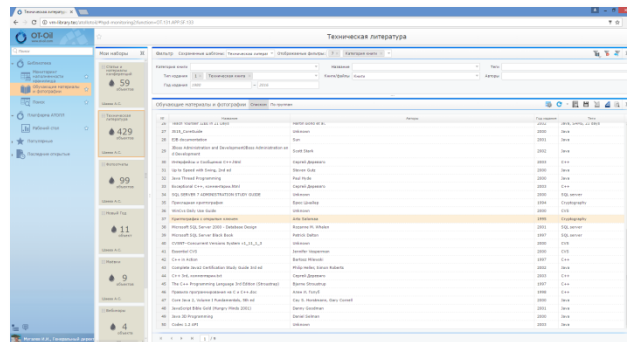
Structured File Storage

Oilfield, Geological and Logs DB

Reservoir G&E Models Depository

E&P drill&dev docs Depository

Seismic Data Depository



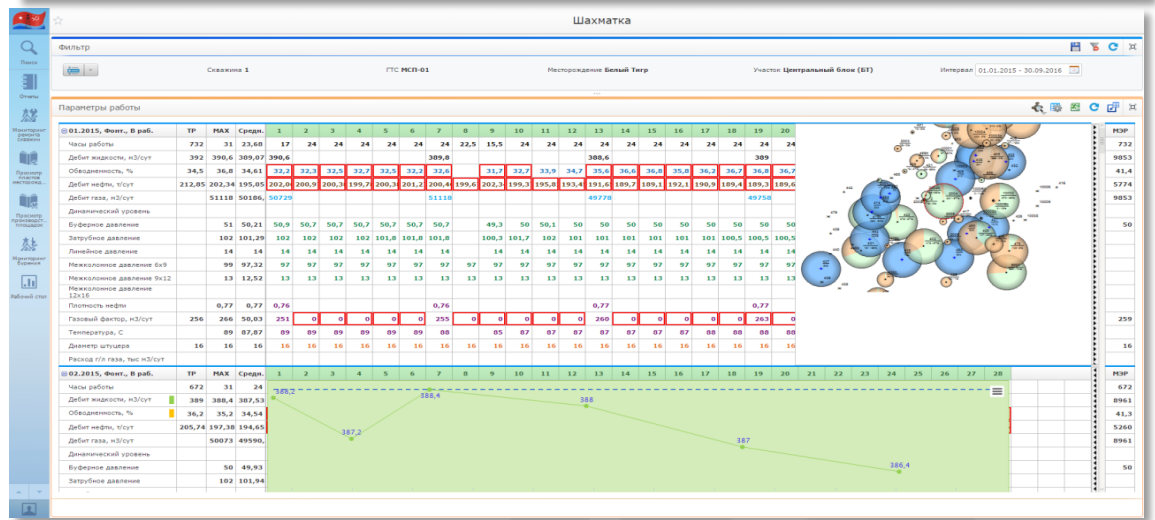
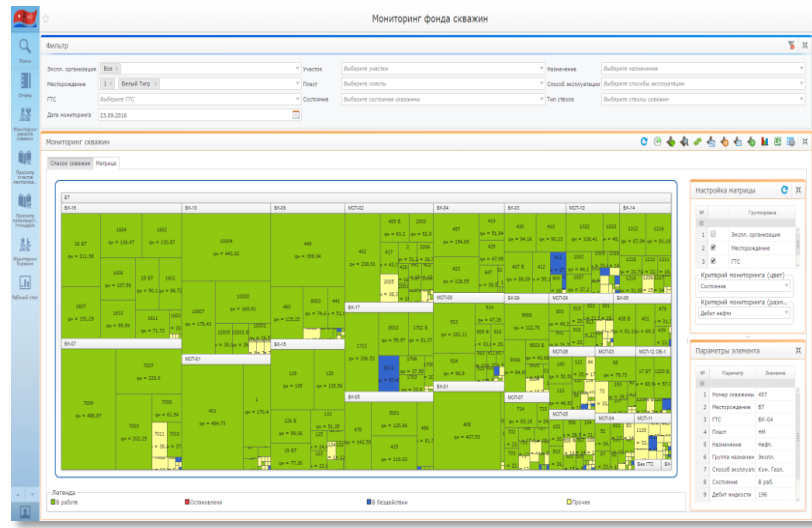
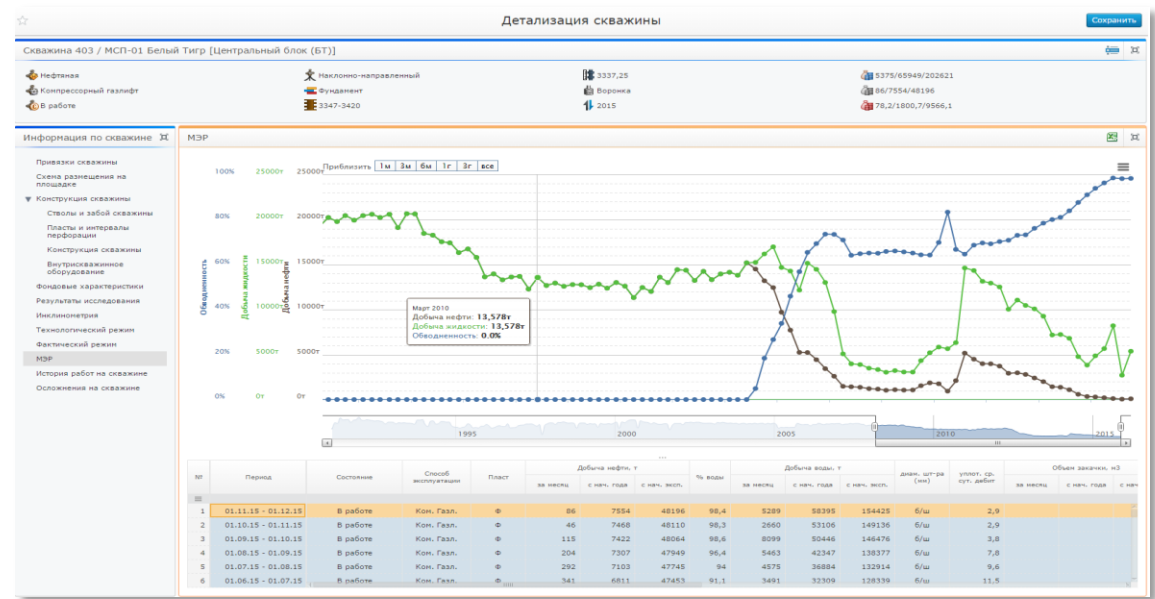
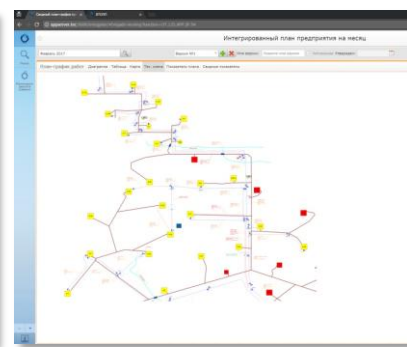
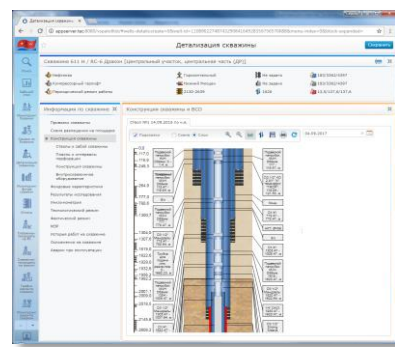


Well Data Depository
(Shore, Offshore)

Technological
Activities Program

Oil production/Water
injection

Technological
Activity Efficiency





Well Constructing

Supervising

Well Repairs

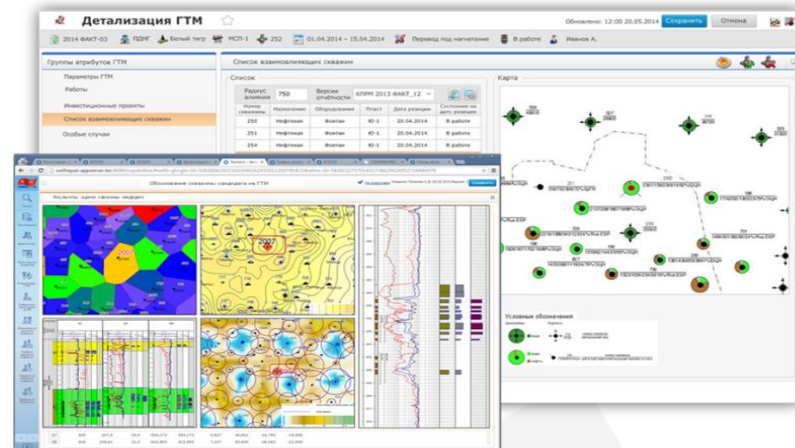
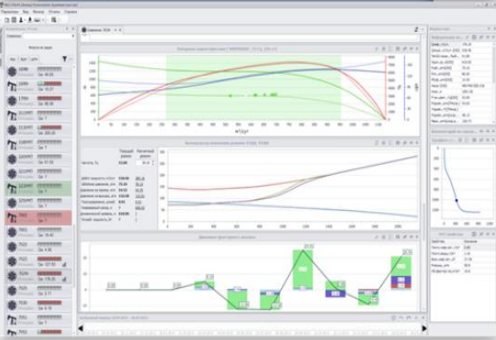
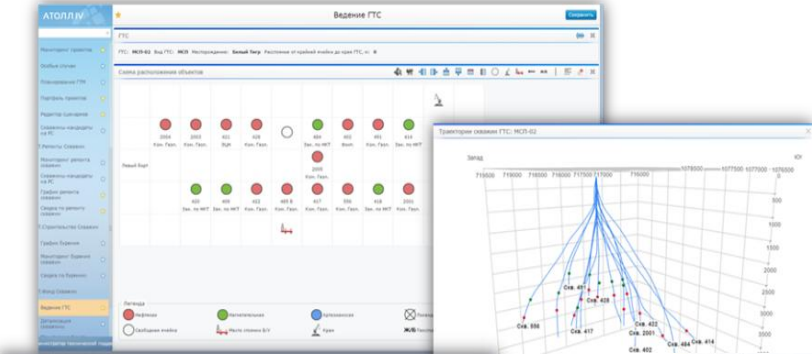
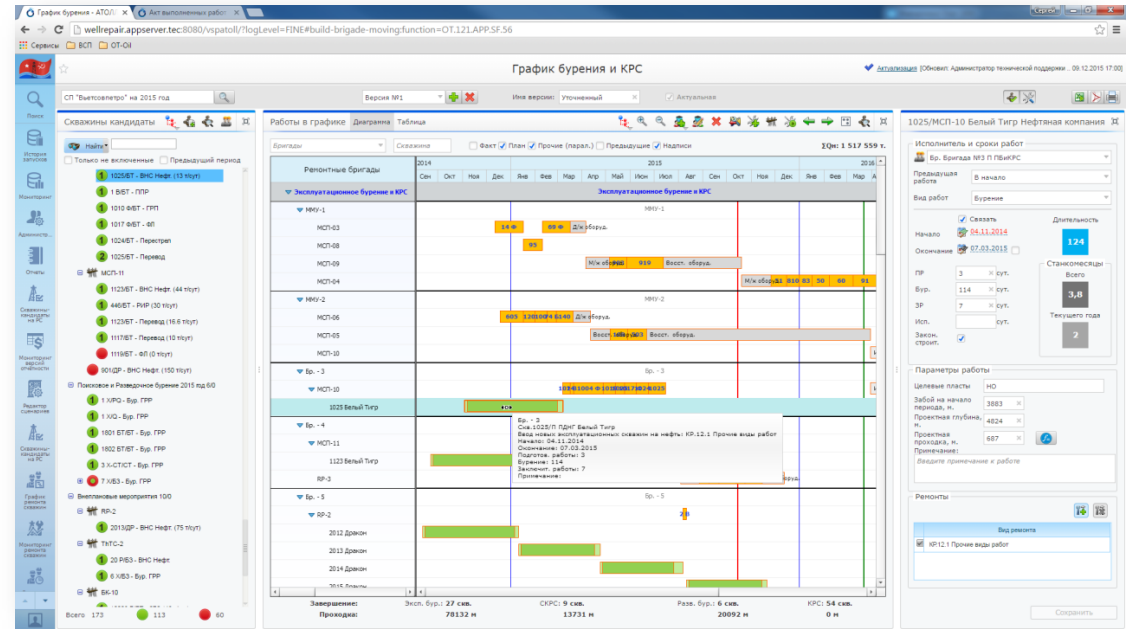
Crew Movement Schedule

Well Research

Crew Reports

Well Protection

Monitoring of Downtime





Register of indicators and requirements

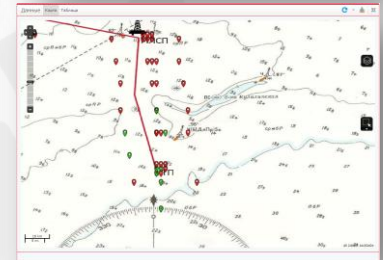
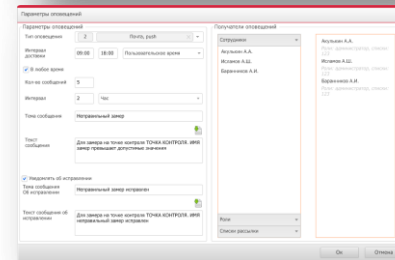
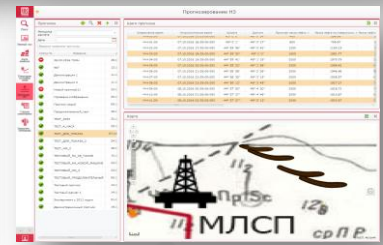
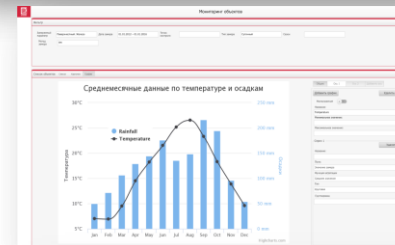
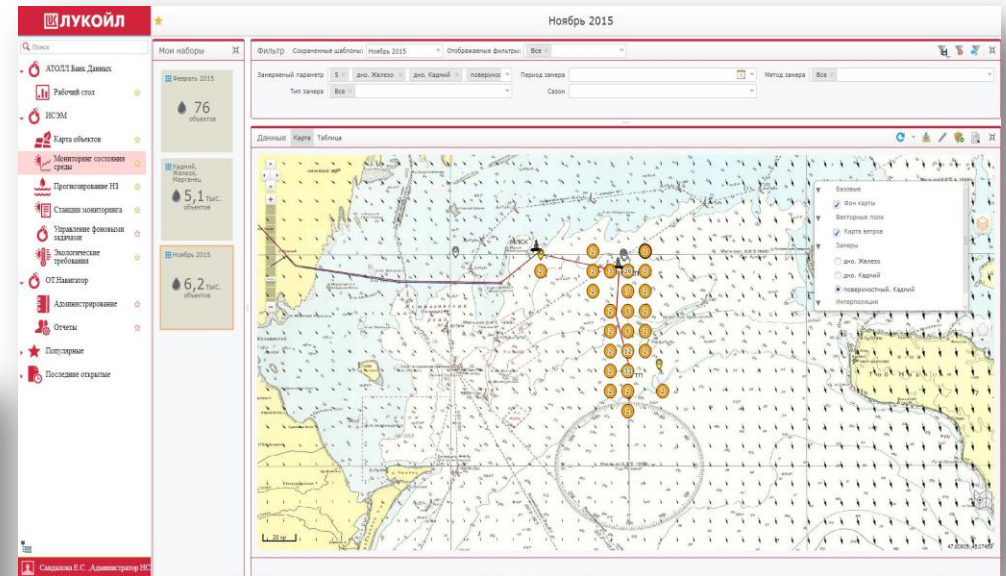
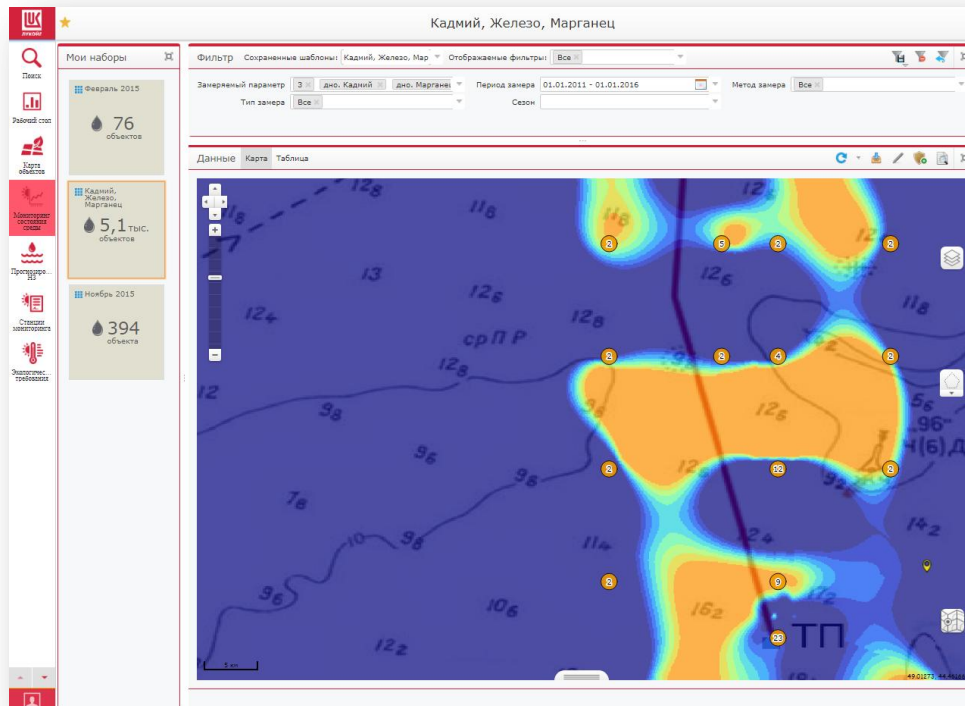
Interpolation maps

Results of observations

Forecasting emergency spill

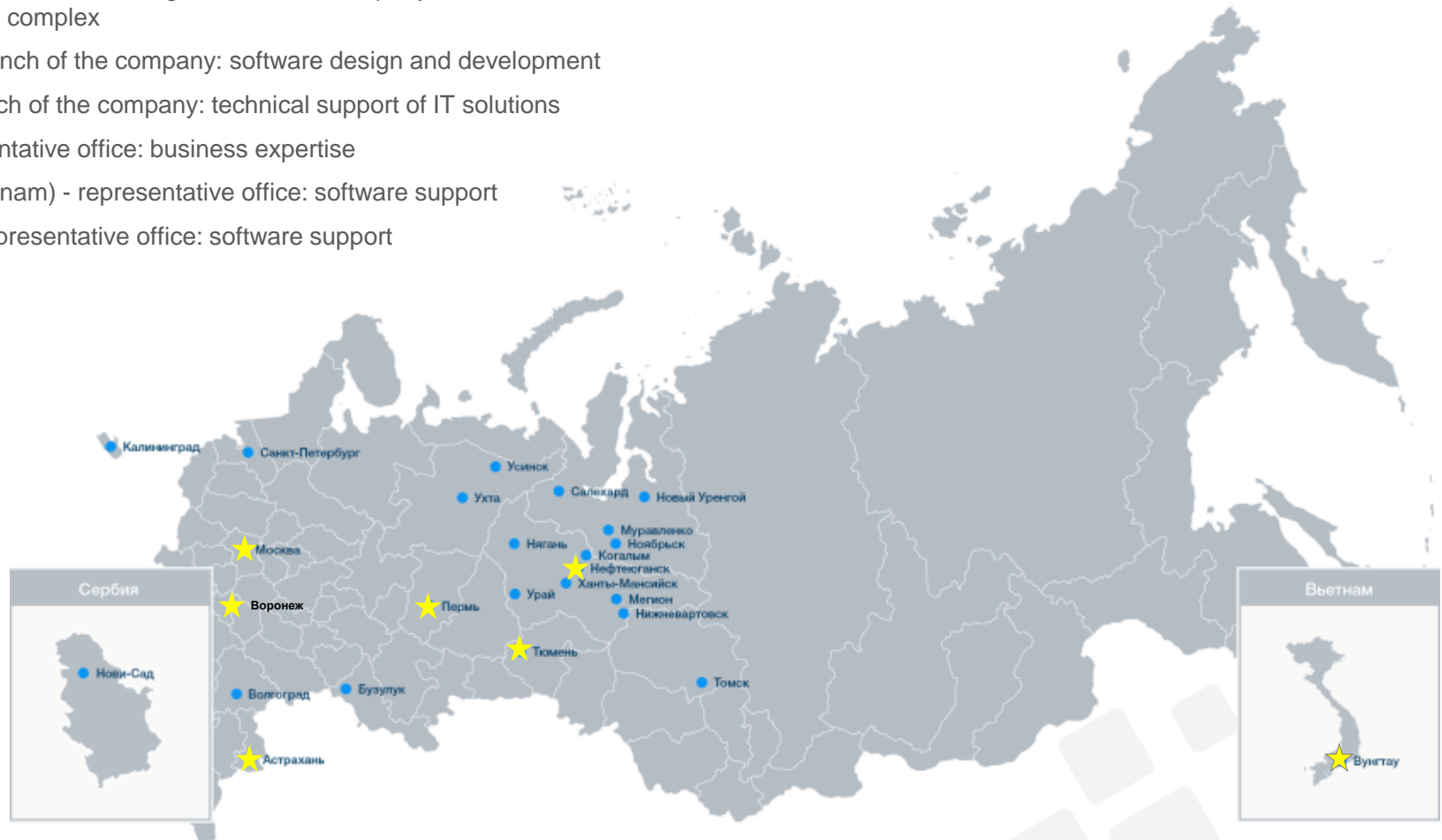
Weather data

Spill response plan





- ★ **Moscow** - central office: management of the Company and business examination of the fuel and energy complex
- ★ **Voronezh** - branch of the company: software design and development
- ★ **Tyumen** - branch of the company: technical support of IT solutions
- ★ **Perm** - representative office: business expertise
- ★ **Vung Tau (Vietnam)** - representative office: software support
- ★ **Astrakhan** - representative office: software support



Novi Sad (Serbia) industrial exploitation of the application ATOil WBI Program in Gazpromneft



A. Optimization of Upstream production processes

Business-tasks:

1. Keeping a well stock
2. Forecasting production levels in field development
3. Well construction planning
4. Monitoring and management of well construction processes
5. Monitoring of regulation of development of deposits and formation of the reporting under the investment program
6. Planning and rationing of well repairs
7. Monitoring the performance of well repairs by service teams
8. Acting well repairs
9. Environmental monitoring
10. Process Performance Management

Significant completed projects:

- 
 Planning and monitoring of the implementation of investment projects, calculation of additional production (GTM DB).
- 
 Planning and monitoring of the implementation of investment projects, calculation of additional production (WBI-Invest)
- 
 Planning and monitoring of the implementation of investment projects, calculation of additional production
- 
 Planning and monitoring of the implementation of investment projects, calculation of additional production (Program WBI)
- 
 Automation of service control at the well
- 
 Planning, control and accounting of well repairs
- 
 Planning, control and accounting of well repairs
- 
 Short-term and long-term planning of production levels. (Subsystem «Forecasting»)
- 
 Environmental monitoring of oil production on shelf(ISEM)
- 
 Monitoring KPI on mobile devices. (iAnalytics)
- 
 Monitoring KPI on mobile devices. (iAnalytics)
- 
 Automation of oil production on the shelf (all ATOLL IV applications)



B. Consulting services

Business tasks:

1. Audit and transformation of Upstream processes

2. Master Plan development for optimization of Upstream processes

3. Information System technical design and specifications development

Significant completed projects:

- 

Conducting research and build a business model for the processes of Oil Production in the Central Office of OJSC ROSNEFT and the extracting subsidiary company RN-Yuganskneftegaz (2006)
- 

Pre-project research of of the Oil and Gas Production Association of the oil company LUKOIL within the project «Digital Oil Field» (2013)
- 

Development of regulations on business trips of the President of the Company. Development of regulations on internal communications. ROSNEFT Oil Company (2011)
- 

Research and formation of a map of IT solutions and information flows of GAZPROM's subdivisions. (2010)
- 

Inspection of the automation level of the divisions of JV VIETSOVPETRO (2012)
- 

Formation of an information technology development strategy of JV VIETSOVPETRO (2012)
- 

Development of an IT development strategy for Rosneft for the period 2011-2015.
- 

Development of technical specifications for GIS of the fuel and energy complex. Ministry of Energy (2012)
- 

Sketch and technical design of integration of business processes between the subsystems «Audit of Resources» and «Subsoil Management» of CIS «Exploration, Development and Exploitation of Deposits» and Integrated Management System for Oil and Gas Producing Companies. (2010)
- 

Development of the Project of elements of DOF (2015)
- 

Designing a conceptual data model for the Exploration and Production Block. (2013)
- 

Creation of technical assignment and draft design for the information system of the Crisis Management Center. (2014)
- 

Creation of a technical assignment for the information system "Petrochemical management". (2014)
- 

Designing of informational and managing system of mineral resources and raw materials (2016)



C. Organization of Data Banks and Warehouses

1. Installation of centralized and distributed storage system of production information (field, geological and seismic data)
2. Deploying Electronic Archives
3. Audit of information flows among industrial IS
4. Setting up Integration among production IS
5. Optimization and modernization of existing applications
6. Delivery of ORACLE licenses
7. Performance audit and optimization of IT infrastructure components (servers, communication channels, information systems, applications, etc.)



Deployment of the distributed Data Warehouse of field and geological and geophysical information (2008)



Deployment of a distributed Data Bank of geological models, project documentation, well construction projects, etc. (2010)



Deployment of a distributed Data Bank of geological models, project documentation, well construction projects, etc. (2010)



Deployment of the Data Bank of geological models, project documentation, well construction projects, etc. (2012)



Deploying a distributed Data warehouse for electronic wells (2012)



Deployment of a centralized data warehouse for electronic wells (2014)



Deployment of the Bank of Data of the Wells Fund and GTM (2006)



Deployment of the Bank of Data of the Wells Fund and GTM (2011)



Deployment of the Bank of Data of the Wells Fund and GTM (2014)



Deployment of the Bank of Data of the Wells Fund and GTM (2014)



Deployment of a centralized database of production indicators (2013)



Deployment of the Industry Data Warehouse for Production Indicators of the Fuel and Energy Complex (GIS Data Storage NEFTECONTROL) (2012)



Deployment of Geological Exploration Data Warehouses (2016)



Research and formation of a map of IT solutions and information flows of GAZPROM's divisions (2010)



Integration of Platform ATOLL with customers' software: Finder, OpenWorks, Oil production, OIS, ROXAR ResVIEW, PetroBANK, AWS of exploration and development of deposits, IS CRT, ArcGIS, Consultant+, Merak Peep, RN-Mining, RN-CDS, UIPS etc (...-2017)

THANK YOU FOR YOUR ATTENTION!



4a/3, General Tyulenev St., Moscow, Russia, postal code 117465
Tel. (495) 565-35-96
e-mail: info@ot-oil.com
www.ot-oil.com
www.ot-oil.pdf

