

Corporate Profile

Stanley Electric (Asia Pacific) Ltd.

Inauguration of the enterprise

December 29, 1920

Establishment

May 5, 1933

President and Representative Director

Takanori Kitano

Employees

Consolidated	16,244
Non-consolidated	3,498

Capital stock

\30,514 Million (**\$271 Million**)

Net sales

Group \442,165 Million (**\$3,463 Million**)

Net income attributed to owners of parent

Group \36,008 Million (**\$255 Million**)



Head Office
(Tokyo)

Company with 100-year-tradition, toward further future.

In 1920, Kitano Shokai, currently as Stanley Electric, was founded. The company started to manufacture automotive bulbs when only 8,000 vehicles were in Japan. Stanley has been striving to challenge top level light technologies with management and development abilities to look through the world and the future. Its history of Creating Light is continuing to further future.

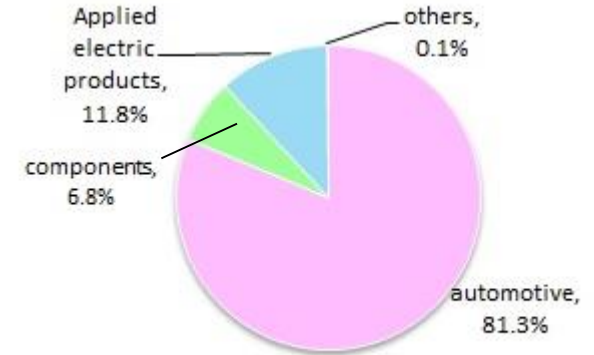
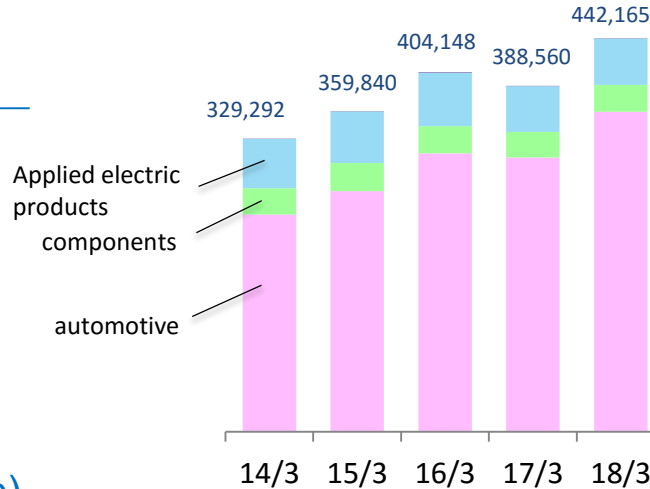


Origin of the corporate name

The company was named after the intrepid 19th-century English explorer Sir Henry Morton Stanley, who was renowned for the vision and courage he had so abundantly demonstrated during his exploits on the continent of Africa.

Net sales (Millions Yen)

► Sales \442,160 million
(\$ 3,463 Million)

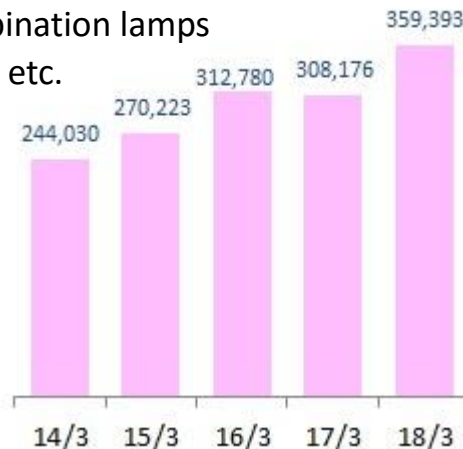


Segment Net sales (Millions Yen)

■ Automotive Equipment Business

► Sales \359,393 million (\$3,267 million)

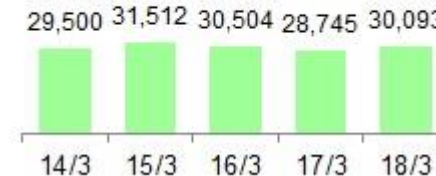
- Headlamps
- Rear combination lamps
- LED bulbs, etc.



■ Electronic Components Business

► Sales \30,093 million (\$274 million)

- LEDs
- Infrared LED lamps
- Optical sensors
- LCDs
- Sub miniature lamps, etc.



■ Others

► Sales \291 million
(\$3 million)

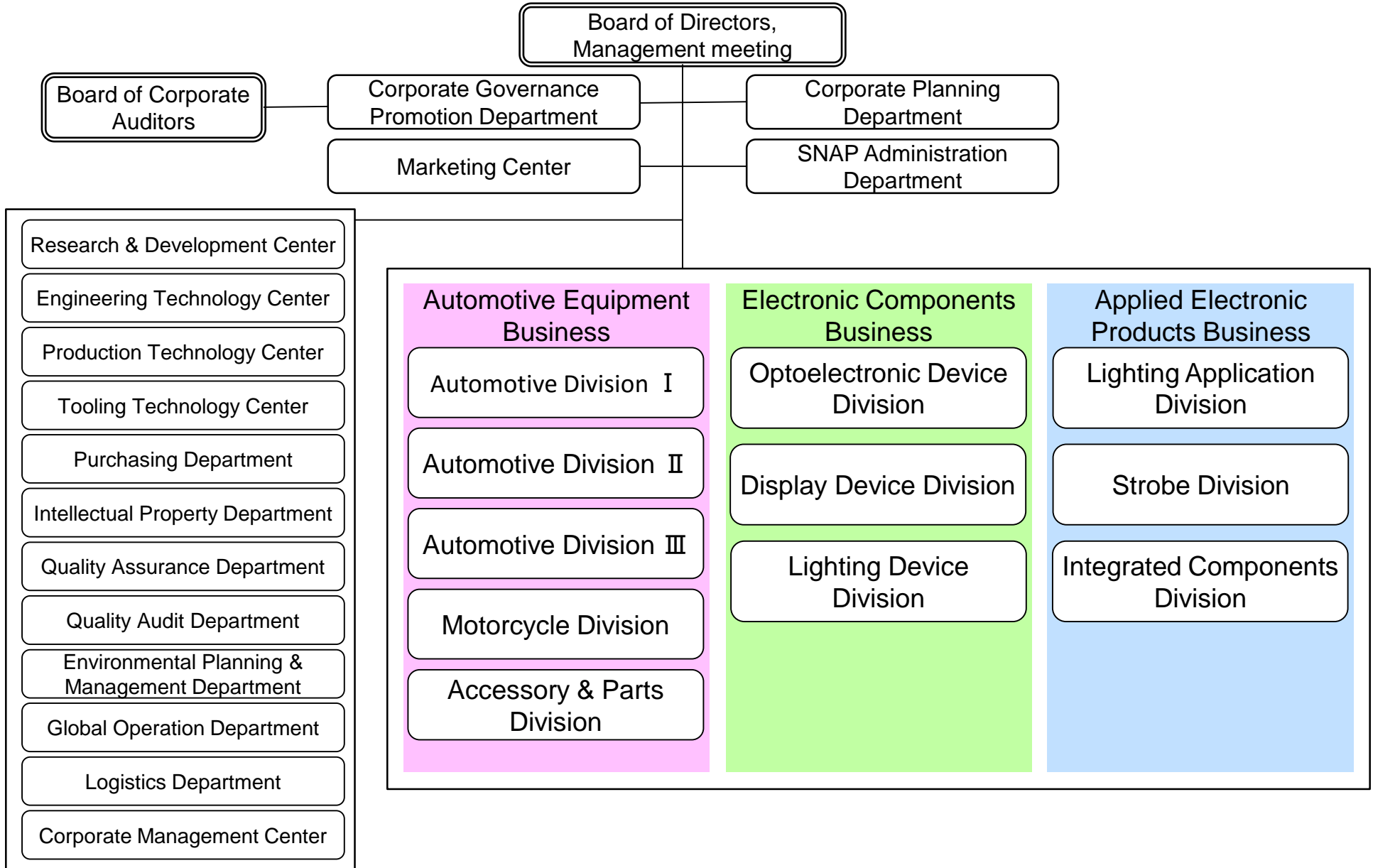
- Project for promotion of employment of the physically disabled
- Financial and management services provided within the Stanley Group, etc.

■ Applied Electronic Products Business

► Sales \52,250 million (\$475 million)

- LED lighting products
- Backlight units for LCDs
- Flash units for cameras
- Operation panels, etc.





Four-wheeled motor vehicle

Headlamps



HONDA "NSX"



TOYOTA "RAV4"



MAZDA "CX-5"



MITSUBISHI
"Pajero Sport"



NISSAN "NAVARA"



SUBARU "LEGACY"



SUZUKI "ALTO"



DAIHATSU "THOR"

Rear combination lamps



HONDA "NSX"



TOYOTA "Lexus NX"



MAZDA "ROADSTER"



MITSUBISHI
"ECLIPSE CROSS"



NISSAN "SKYLINE"



SUBARU "ASCENT"

Two-wheeled motor vehicle

Headlamps



HONDA "CBR1000RR SP"



YAMAHA "AEROX155"



SUZUKI "GSX-R150"



KAWASAKI "Z1000"

Tail lamps



HONDA "CBR1000RR SP"



YAMAHA "Janus"



SUZUKI
"GSX-R150"

Accessory & Parts

Hyper halogen



LED bulb for Head lamp



RAYBRIG



LED illumination Crystal lamp

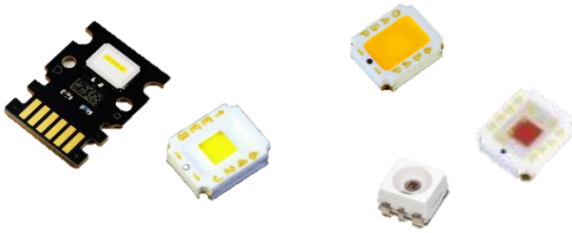


Illumination for Brand

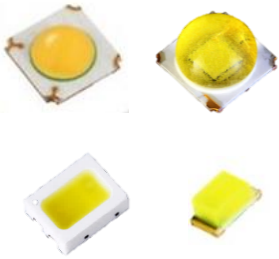


LED Devices

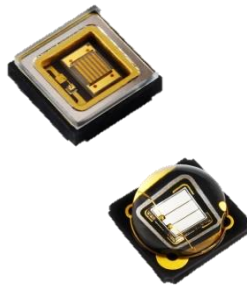
LED for automotive



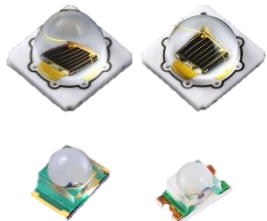
White color LED



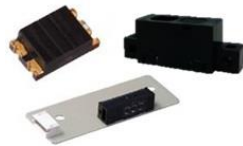
UV LED



Infrared LED



Optical sensor



LCD Modules

S-PBT LCD
(Special-Pure Black Technology LCD)



Panel with built-in flexible-cut



Lamp and Bulb Devices

UV Cold Cathode Lamp
(UV-CCL)



UV-CCL reactor



LED-SOCKET



Automotive light bulb



Backlight units and Lighting Products

LCD backlight unit



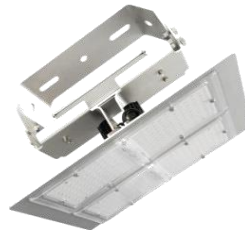
LGF
(Light Guide Film)



LED lighting for landscape and events



LED lighting for facility



LED Lighting for harbor



LED lighting for road



Strobes and Optical units

LED strobe light unit



Phosphor wheel



Interface development

TOF range imaging sensor



Operation panel of office automation equipment



KARAOKE Operation panel



Automotive electronics

Air conditioning operation panel



Sensor



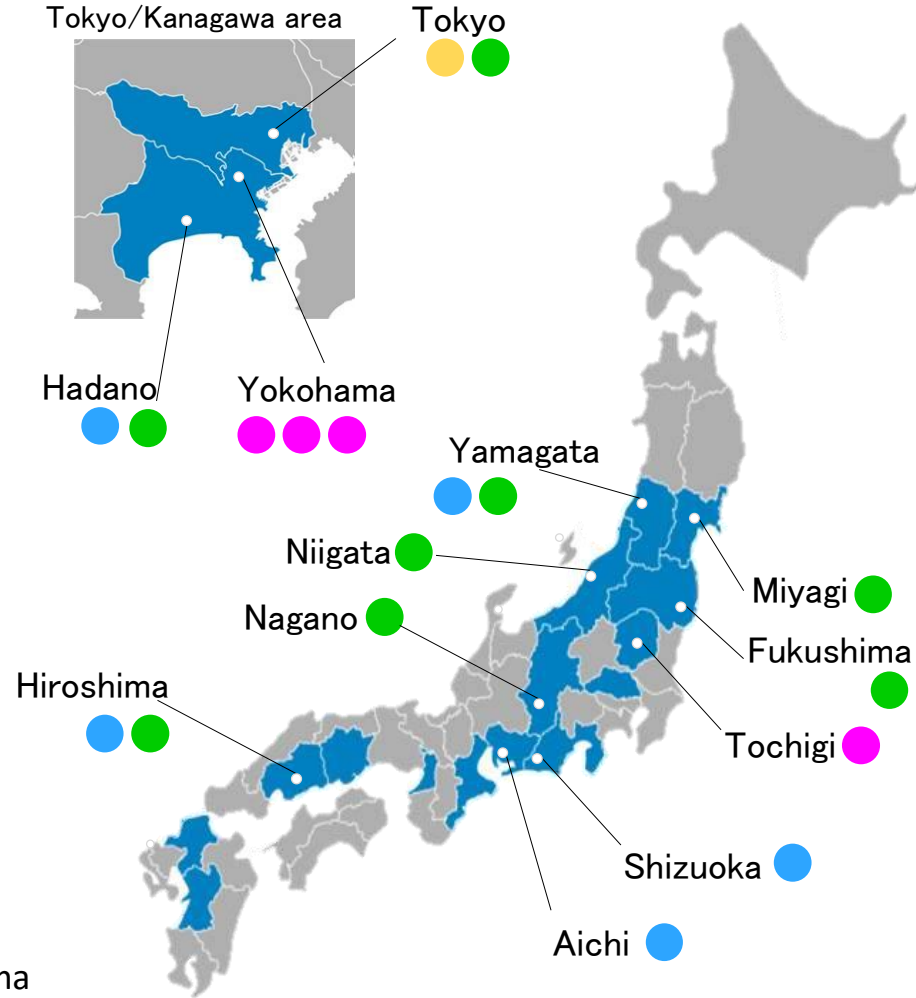
Current sensor

Auto light insulation sensor

Control unit for heated seat



Head Office	Stanley Electric Co., Ltd.
Technical Center & Laboratory	Research & Development Laboratory Yokohama Technical Center Opto Technical Center Utsunomiya Technical Center
Factory	Yamagata Factory Hadano Factory Hamamatsu Factory Okazaki Factory Hiroshima Factory
Group Company	Stanley Iwaki Works Co., Ltd. Stanley Tsuruoka Works Co., Ltd. Stanley Miyagi Works Co., Ltd. Stanley Pal Co., Ltd. Stanley Niigata Works Co., Ltd. Stanley WELL Corp. Matsuo Electric Co., Ltd. Stanley Pal Co., Ltd.
Sales Office	Sendai Iwaki Utsunomiya Omiya Sayama Asaka Yokohama Hadano Hamamatsu Okazaki Nagoya Suzuka Osaka Mizushima Hiroshima Fukuoka Kumamoto



Factory

- 1 **Asian Stanley International Co., Ltd.**
(Pathumthanee, Thailand)
Electronic components business
Applied electronic products business
- 2 **Thai Stanley Electric Public Co., Ltd**
(Pathumthanee, Thailand)
Automotive equipment business,
Electronic components business,
Others
- 3 **PT. Indonesia Stanley Electric**
(Banten, Indonesia)
Automotive equipment business,
Electronic components business
Applied electronic products business
- 4 **Vietnam Stanley Electric Co., Ltd.**
(Hanoi, Vietnam)
Automotive equipment business,
Electronic components business
Applied electronic products business
- 5 **Lumax Industries Ltd.**
(New Delhi, India)
Automotive equipment business,



Sales Office

- 6 **Stanley Electric (Asia Pacific) Co., Ltd.**
(Hong Kong, China)
Automotive equipment business,
Electronic components business
Applied electronic products business
- 7 **Singapore Branch** 8 **Taiwan Branch**
- 9 **Stanley Electric Korea Co., Ltd.**
(Seoul, Korea)
Electronic components business
Applied electronic products business
- 10 **Stanley Electric Sales of India Pvt. Ltd.**
(Tamil Nadu, India)
Electronic components business

Presiding company

- 11 **Stanley Electric Holding Asia-Pacific Pte. Ltd.**
- 12 **Hella-Stanley Holding Pty Ltd.**

(Singapore)
Administration of eight locations in the Asia-Pacific

(Australia)
Investment in automotive lighting business of Stanley / Hella

