

SV Road Mapper

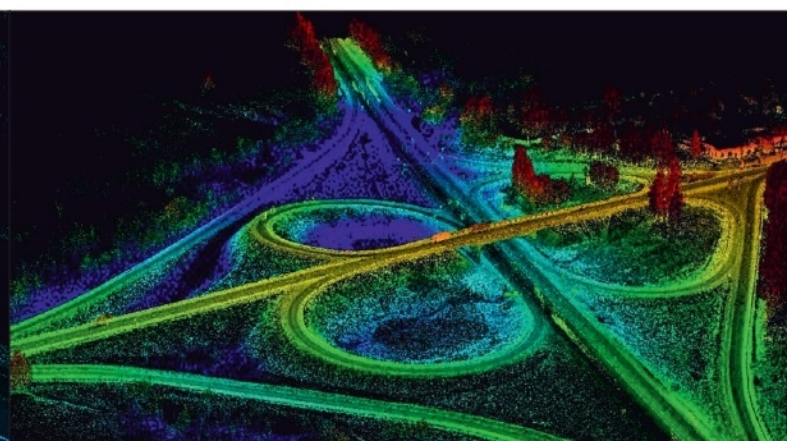
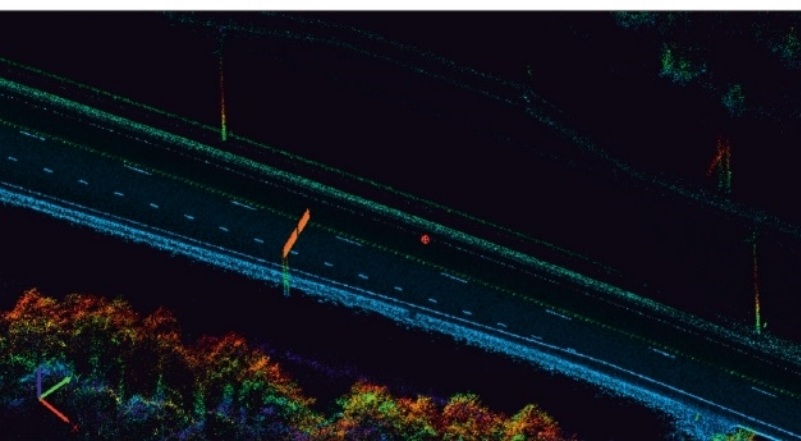


DESCRIPTION

ScanViz Road Mapper is a device designed to receive color 3D point clouds with the maximum range of accuracy. The scanner Z + F Profiler 9012, INS Novatel SPAN -CPT, Ladybug camera running with ScanViz system provide the highest quality and speed of shooting. Within a few minutes this device can be installed on the vehicle and be ready to scan kilometers of roads or railways

FEATURES

- Easy placing
- Usable carrying attachments
- Z+F Profiler 9012
- Accurate internal INS (IMU+GNSS)
- Dual-Antenna, Multi-Frequency GNSS Receiver with RTK
- Remote control via WiFi
- Integrated Web Server for Easy Control
- 12 Mpx global shutter camera
Panoramic 360 deg.



SPECIFICATION

System characteristics

Dimensions: 438x317x554 mm.

Weight: 35.5 kg.

Operating temperature: -10 °C ... +40 °C

Power: 12V 16A

Data Storage up to 15 TB with ext. HDD

Inertial navigation system

GPS/GLONASS/Galileo/Beidou L1/L2

Accuracy RTK mode 1 cm + 1 ppm

100 Hz raw data and solution

Fiber Optic Gyros Range 375 ±deg/s

Accelerometer Range ±10 g ;

Scale Factor 4000 ppm



Camera

Spherical Systems 360° 90% full sphere

12 MP (2 MP x 6 sensors)

122 mm x 141 mm

Sony ICX274 CCD, 1/1.8", 4.4 μm

RES. 1600 x 1200 6.5 FPS

Laser scanner

Range 119 m

Linearity error ≤ 1 mm

Range accuracy 3.1 mm

Data acquisition rate 1.016 million pixel/sec

Rotation speed up to 200 Hz (12,000 rpm)

SOFTWARE

The system is controlled via an intuitive web-based interface from any device on which a browser can be installed. The interface provides the ability to create hardware configurations and settings, allows you to manage the scanning process and quickly receive information about the current state of the system. The result of the software is a colored cloud of points in the formats LAS, LAZ, e57. It is possible to export raw data for use in third-party programs.

